

Sea Axe Mass/Controlled Flow Subsea Excavation



Sea Axe operating in the Nordergründe offshore windfarm within the German shores of the North Sea.

- Dimensions: H 2m x W 2m x H 2.5m, Weight 800Kgs
- Spread Deck Footprint: 10m x 8m
- Operating Depth: 3000m c/w HE HPU
- Hydraulic Supply: 500 ltr/min at 350bar
- Prop Rotation: 0 – 500 RPM
- Exit Flow Rate: 5600 ltr/sec
- Water Column Speed: 6.5 to 10m/s
- Reaction Thrust: 4000Kgs
- Nozzle: High Velocity and Standard
- Deployment: Non-Specific
- Optional Equipment: AHRS Gyro, Camera/Lamp system, Sonar

Overview

The Sea Axe MFE / CFE has been designed to meet the needs of clients operating in the installation, IRM, Renewable Energy and decommissioning sectors of the offshore market.

Sea Axe works through natural erosion of the seabed hence it is the **most environmentally acceptable** method available for subsea excavation. **Natural erosion significantly reduces the impact on the ecological environment.**

Reliability, Quality and Cost Effective

The Sea Axe excavator is easily adaptable and can excavate a wide range of seabed materials up to 200kPa shear strength using the in-built auxiliary jets.

Sea Axe will meet specific project requirements such as rock, sedimentary displacement or seabed penetration for higher gradient profile trenches in sea beds up to 60kPa for product burial.

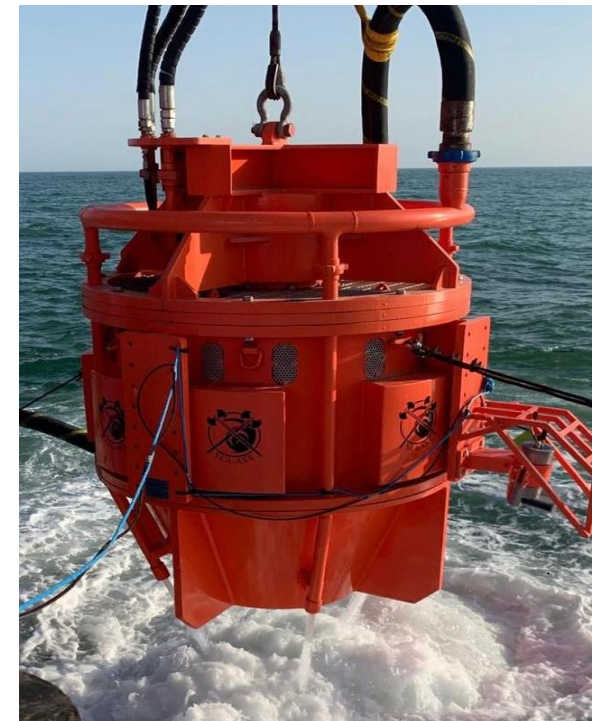
Built in auxiliary jets compliment the high flow displacement capacity by providing four 40 bar cutting jets to displace materials up to 200kPa shear strength.

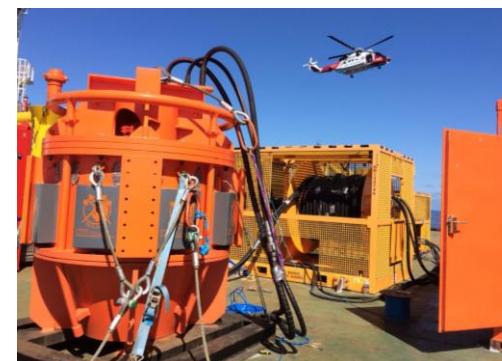
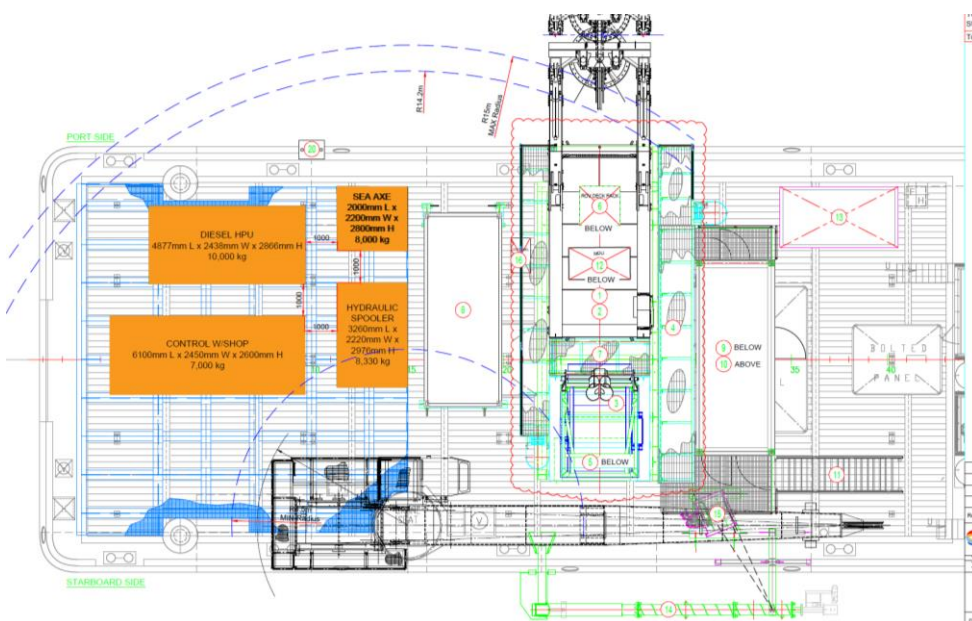
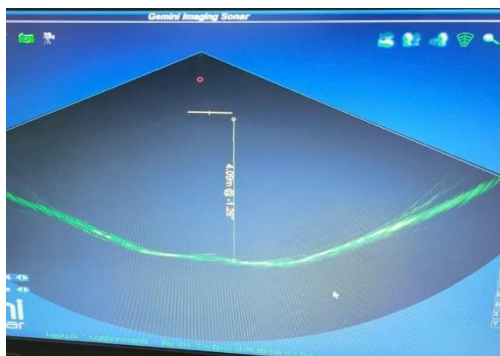
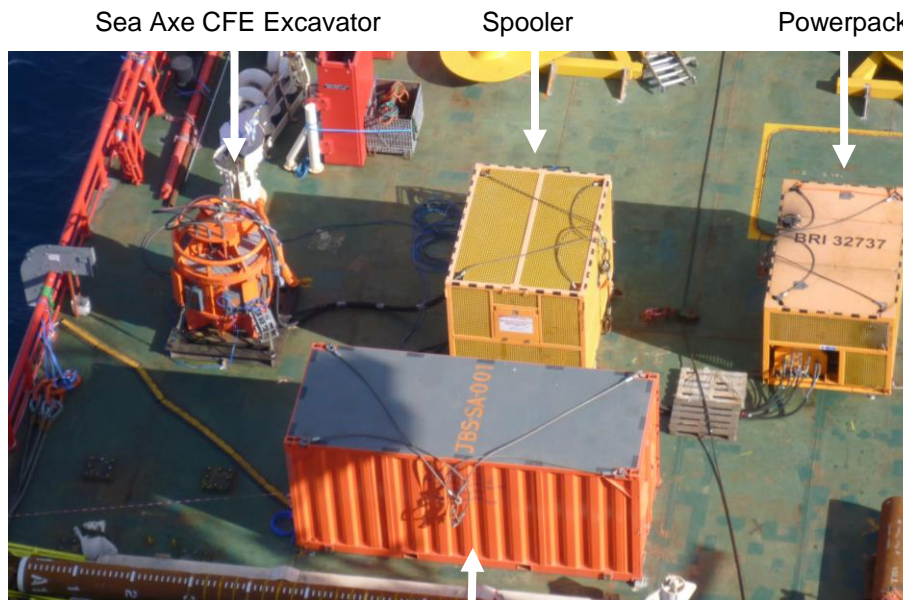
Sea Axe CFE is next generation and the best available technology for controlled flow excavation. Sea Axe uses a patented vortex chamber to ensure complete control & stability during operations.

Improved stability and control ensures that the water column is stable and directly over the target providing more direct power to achieve uniformed excavation in less time with less passes.

Projects are monitored & recorded with 2D and/or 3D real time multi beam systems.

Sea Axe is non-contact and non-intrusive making it ideal for offshore windfarm subsea cable work.





Equipment Spread:

- Sea Axe CFE Excavator
- Spooler includes Hydraulic Hoses
- Powerpack
- Control Room / Workshop
- Ancillary Jetting System
- JBS Operators and Technicians